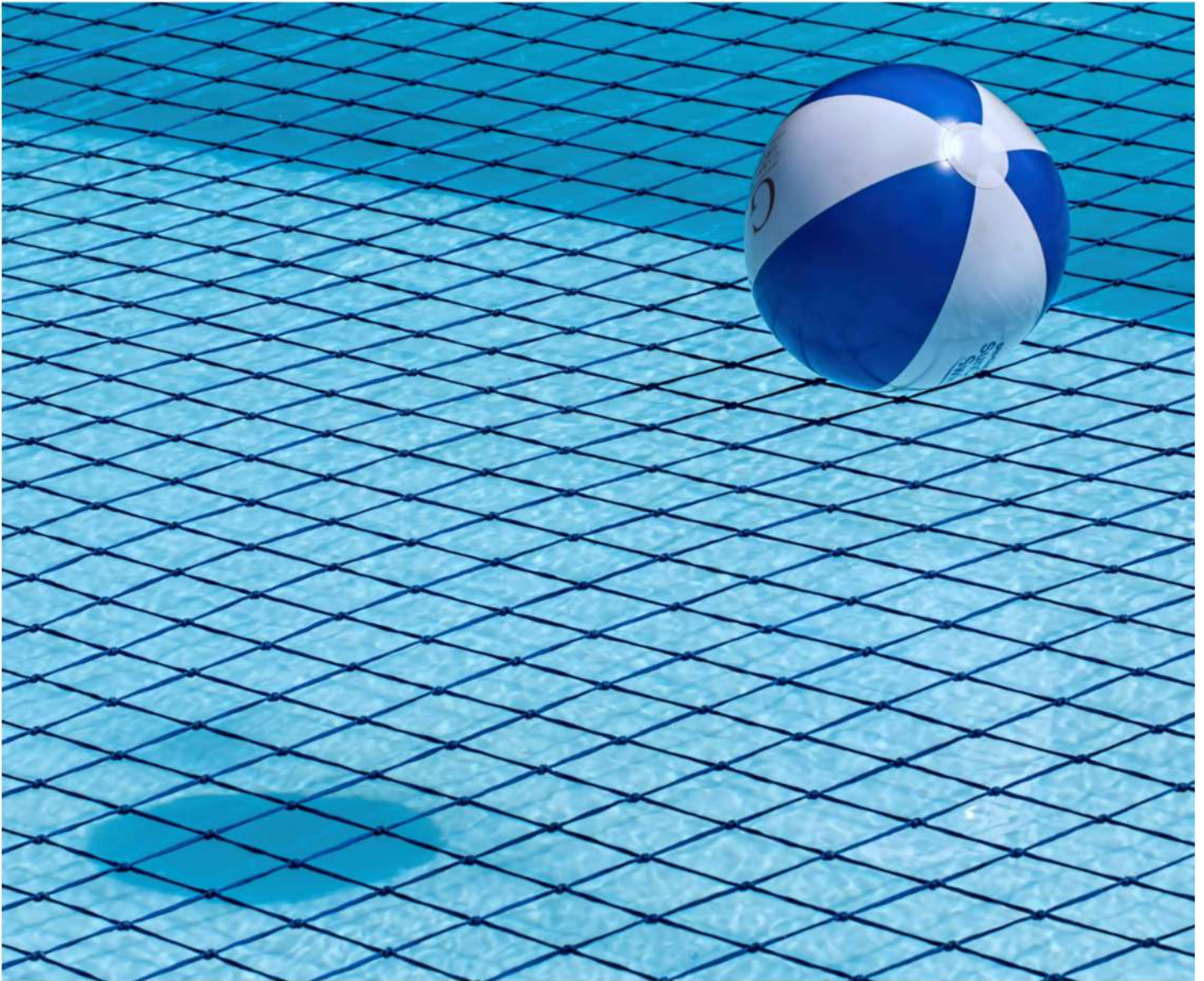


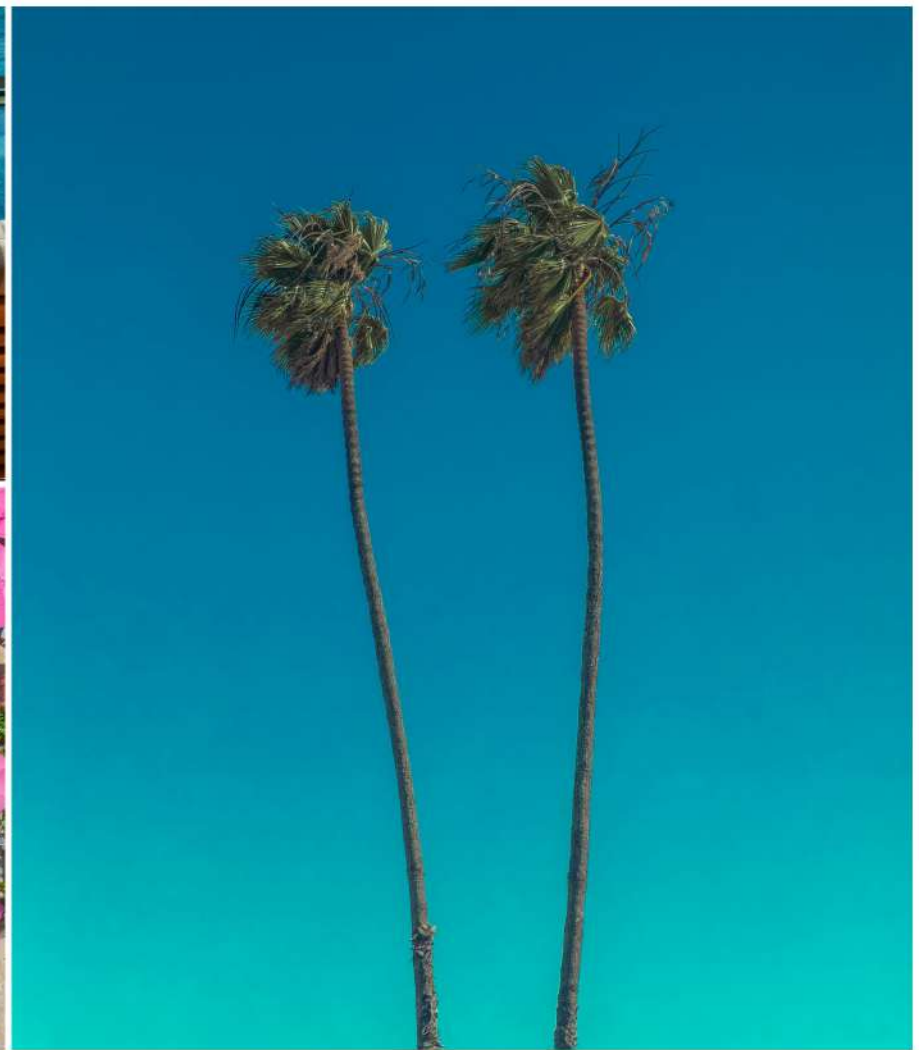


**afras**<sup>®</sup>  
i n d u s t r i e s



# POOL & SPA PRODUCT GUIDE

INNOVATION MATTERS



**Questions? Give us a call at 805.499.1144**

- 2**      **Our Mission**
- 3**      **About Us**
- 4**      **Product Table of Contents**
- 5**      **Terms and Conditions**
- 6**      **Our Products**
- 20**     **Free Shipping**



## OUR MISSION

At Afras Industries, our mission is to provide innovative, high-quality pool, spa, and water industry products that empower distributors to deliver exceptional solutions to their customers. As a trusted member of the Afras family, we combine cutting-edge engineering, scalable manufacturing expertise, and a commitment to excellence to ensure our products meet the highest standards of performance and reliability. By driving innovation and fostering strong partnerships, we aim to enhance the water experience for end-users while supporting the growth and success of our distributors

# AFRAS INDUSTRIES

For over two decades, Afras Industries has been at the forefront of innovation in the pool/spa, and water industries. Founded more than 20 years ago, we first established a distinguished reputation as a trailblazing engineering company, dedicated to crafting cutting-edge solutions that elevate the standards of safety, efficiency, and performance.

## A LEGACY OF EXCELLENCE

Since our inception, Afras Industries has consistently pushed the boundaries of what is possible. Our unwavering commitment to quality, innovation, and customer satisfaction has made us an industry leader, setting new benchmarks for excellence in product design and manufacturing. Our journey began with a vision to transform the pool and spa industry, and today, we stand as a multifaceted enterprise with an extensive range of offerings.

## INNOVATIVE PRODUCT PORTFOLIO

At Afras Industries, we take pride in our diverse product catalog, which includes pool drain covers, submersible pumps, variable speed pumps, and an array of fittings tailored to meet the unique needs of pools and spas. However, our commitment to innovation extends far beyond these core offerings.

## INDUSTRY LEADERSHIP

Our position as a trusted industry leader is the result of our dedication to engineering products that are built to perform. We understand the significance of safety in the pool/spa industry, the efficiency required in the water industry, and the precision demanded by both. Our products reflect this understanding, meeting the most stringent quality and regulatory standards.

## CUSTOMER-CENTRIC APPROACH

Afras Industries operates with a steadfast commitment to our customers. We prioritize collaboration, ensuring that every product we design and manufacture is a result of extensive research and development, addressing the specific needs of our diverse clientele. Our customer-centric approach enables us to create tailor-made solutions that exceed expectations.

## A VISION FOR THE FUTURE

As we look to the future, Afras Industries remains dedicated to the pursuit of excellence. We continue to set new benchmarks, drive innovation, and maintain the highest standards of quality in all our products. Choose Afras for products that not only meet your expectations but exceed them. Experience innovation, reliability, and excellence with each and every product we offer. Join us in shaping the future of the pool, spa, and water industries.

# INNOVATION MATTERS



## Top Products

pg 6-14

Main Drain Covers	PumpWiz
Variable Speed Pumps	SunMuf
Press-In Check Valve	RS Submersible Pumps
3/4 HP Booster Pump	Salt Chlorinators

## New Products

pg 15-20

Lighting by NeuTerra  
New Valves  
Cordless Vacuum  
Waterfall Motor

## Main Drain Covers

pg 21-22

Anti-Vortex VGB Sump-less	Anti-Vortex VGB Sump
------------------------------	----------------------

## ABS Fittings

pg 23-26

Directional Flow Inlets	Vacuum Inlets
Slip Jet Return	PVC Reducer
Extension Return	FIP Fittings
Specialty Fittings	Winterizing Plugs

## ABF Brass

pg 27-28

Drains	Wedges
Fittings	Hooks
Sight Glass	

## Vacuum & Cleaning

pg 29

Vakpump  
Wireless Spa Vacuum  
C.P.B Vacuum Cleaner  
Vacuum Parts

## Salt Chlorinators

pg 30

CFPT  
Replacement Cells

## Pumps

pg 31-36

Submersibles	RS100
Booster Pump	RS200
Replacement Motors	RS300
Variable Speed Pumps	RS400

# AFRAS INDUSTRIES

## TERMS AND CONDITIONS

### ACCEPTANCE OF ORDERS

All order and contracts are subject to acceptance by Afras Industries Inc. (hereafter referred to as Afras) and to the conditions herein set forth. Verbal orders are accepted under certain conditions, but Afras reserves the right to withhold actual shipment until written confirmation is received.

### PRICES

PRICES ARE SUBJECT TO CHANGE WITHOUT NOTICE AND WILL BE THOSE IN EFFECT AT THE TIME OF SHIPMENT. Prices do not include any applicable state or local taxes.

### TERMS

Shipments will be made on open account upon final approval by our Credit Department, otherwise billing will take place COD or credit required. For international sales, 100% payment is required prior to shipment. Minimum billing will be \$50.00 net. If order is received under \$50.00 net, a \$10.00 surcharge will be applied to that order.

### DISCOUNTS AND PAYMENTS

Invoices are usually sent one business day after the day of shipment. Terms are net 30 days from invoice date (only US customers) or as otherwise indicated.

### PACKING

Prices include packing for domestic shipping. Additional packing charges are made when extra, protective packing is required.

### SHIPMENT ROUTING

Customer may request shipment via specific trucking companies or routing. Whenever possible and practicable, Afras will comply with these instructions. However, Afras reserves the right to select a carrier or method of shipment.

Partial orders of specific items will be shipped at the customer's request. Afras may elect to ship a partial order if there is sufficient weight to make an economical shipment. Back-ordered items will be sent when available via the most economical routing.

### DELIVERIES

The responsibilities of Afras cease upon consignment of a shipment to any common carrier. Afras does not, unless previously instructed, insure shipment beyond the point of consignment to such common carrier.

### CLAIMS

Responsibility for safe shipment passes to the carrier upon consignment of merchandise to the carrier and receipt by Afras of a signed Bill of Landing. Any claims for shortage of damage, whether concealed or obvious, must be filed with the Delivering Carrier by the Consignee. Shortages or discrepancies between contents of cartons and Packing List must be reported to Afras in writing within 5 days of receiving shipment. Full details must be included.

### RETURN OF GOODS

No returns should be made without a written request and authorization by Afras. Merchandise returned without authorization, freight collect, will be refused by Afras. After receipt of a Return Goods Authorization form, the merchandise is to be shipped FREIGHT PREPAID in the manner and to the destination designated. New, unused material of current design, accepted by the company for credit as charged, is subject to a minimum handling and restocking charge of 25%. ITEMS MADE TO CUSTOMER'S SPECIFICATIONS ARE NOT RETURNABLE.

### GURANTEES AND WARRANTIES

Afras guarantees that all products, when shipped, are free from manufacturing defects or faults. That when installed, applied, and used according to instructions will perform according to specifications. Some Afras products are under warranty for specific periods. If they fail to fulfill the warranty, a prorated credit is given for the unfilled period. Equipment and accessories not manufactured by Afras are under warranty only to the extent of the original manufacturer's warranty. All claims for defects under our guarantee or warranty must be reported in writing to Afras. We reserve the right to request the return of such merchandise to our plant, or where directed, freight prepaid, for inspection. Returned merchandise found defective under guarantee or warranty will be repaired or replaced. No claims for labor, cartage or other consequent damages will be allowed.

### CHANGES OF DESIGN

Progressive changes may be made in the design, construction or specifications of any product. No obligation or liability on the part of Afras is assumed or implied to furnish or install said changes on products previously sold. Afras reserves the right to discontinue the manufacture and sale of any product.

### CONDITIONS

All sales made by Afras are subject to these conditions. No exceptions will be permitted unless agreed to in writing by an authorized officer of the company. In all cases of conflict between these conditions and those on a customer's purchase order, these conditions shall take precedence.



# TOP PRODUCTS



## **afras**

### Anti-Vortex ABS Drain Covers

Featuring a patented anti-vortex design, this product ensures safety and optimal water circulation. In addition to its safety features, this product is fully VGB compliant and certified. It includes 2 mounting screws and is crafted from durable ABS plastic, guaranteeing long-lasting performance.

7.375-inch diameter cover with 6.78-inch center distance between mounting screws.  
Product Code: **11064X**

7.375 inch diameter cover with 7.75 inch mounting ring.  
Product Code: **10064X**

11.125-inch diameter cover with 6.78-inch and 10.5-inch center distances between mounting screws.  
Product Code: **10064AX**

11.125-inch diameter cover with 11.5-inch mounting ring.  
Product Code: **10064AXR**

## PRODUCT FEATURES

### 7 inch - 11064

- 7.75 inch diameter ring
- 6.78 inch CTR distance
- Patented Anti-Vortex Shape
- VGB compliant and certified
- Includes 2 mounting screws
- ABS plastic

### 11 inch - 10064A

- 11.125 inch diameter cover
- 10.5 inch and 6.78 inch CTR distance
- Patented Anti-Vortex Shape
- VGB compliant and certified
- Includes 6 screws for 2 mounting options
- ABS Plastic

## AVAILABLE IN A VARIETY OF COLORS



PRODUCT	WHITE	BLACK	TAN	DARK GRAY	LIGHT GRAY
7 INCH COVER	11064W	11064BK	11064TAN	11064DKGY	11064LTGY
7 INCH WITH RING	10064W	10064BK	10064TAN	10064DKGY	10064LTGY
11 INCH COVER	10064AW	10064ABK	10064ATAN	10064ADKGY	10064ALTGY
11 INCH WITH RING	10064AWR	10064ABKR	10064ATANR	10064ADKGYR	10064ALTGYR
7 INCH RING	12051W	12051BK	12051TAN	12051DKGY	12051LTGY
11 INCH RING	11064AWR	11064ABKR	11064ATANR	11064ADKGYR	11064ALTGYR

# TOP PRODUCTS



## **afras** Variable Speed Pumps

Upgrade your pool with the Afras Variable Speed Pump, available in 1.5, 2.0, and 3.0 HP models. Featuring a simple interface, IPX6-certified enclosure, and onboard scheduling, it's designed for effortless control. Adjustable priming and quick-clean modes add convenience, while diagnostic alarms ensure smooth operation.

Enjoy ultra-quiet performance, unionized fittings for easy installation, and a TEFC motor for long-lasting durability. The self-priming design ensures quick start-ups, and a see-through lid simplifies maintenance.

Certified ETLUS/CETL with active power correction, this pump delivers energy-efficient, reliable performance for a pristine, hassle-free pool.

Product Code: 1.5 - FB2015VS  
2.0 - FB2020VS, 3.0 - FB2030VS



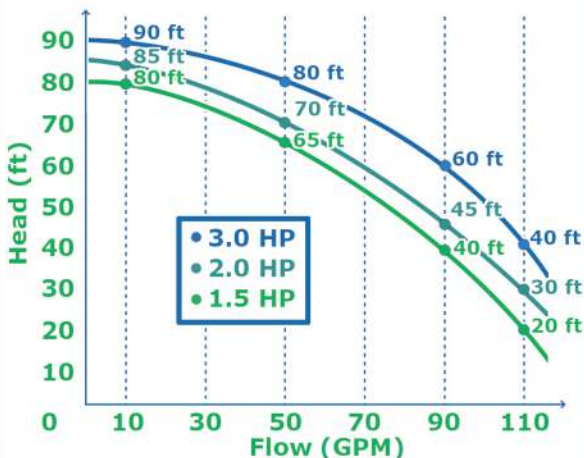
**AVAILABLE IN 1.5 HP, 2.0 HP, & 3.0 HP**  
PRODUCT CODE: FB2015VS FB2020VS FB2030VS



## PRODUCT FEATURES

- Simple user interface
- IPX6 certified UV and rain-proof enclosure
- Onboard time of day schedule
- Adjustable priming mode
- Programmable quick clean mode
- Diagnostic alarm display and retention
- Active power factor correction
- Energy Efficient
- Extremely quiet operation
- Unionized fittings (1.5" and 2") for simple replacement
- Strainer cover kit for easy cleaning and maintenance
- Super-duty totally enclosed fan cooled (TEFC) motor
- Integral volute and pot reduce hydraulic noise
- See-through lid permits easy inspection
- Self-priming for quick, easy start-up
- ETLUS/CETL Listed

## DYNAMIC HEAD VS FLOW



## REPLACEMENT MOTORS ALSO AVAILABLE!

PRODUCT	CODE
1.5 HP "C" MOTOR & CONTROL	21150VS
2.0 HP "C" MOTOR & CONTROL	21200VS
3.0 HP "C" MOTOR & CONTROL	21300VS
2.0 HP SQ MOTOR & CONTROL BLK	71200VSB
2.0 HP SQ MOTOR & CONTROL TAN	71200VSA
3.0 HP SQ MOTOR & CONTROL BLK	71300VSB
3.0 HP SQ MOTOR & CONTROL TAN	71300VSA





## PRESS-IN CHECK VALVE

Introducing the Afras Press-In Check Valve – an innovative plumbing solution designed for optimal water flow control.

Available in 1.5-inch and 2-inch, this check valve seamlessly fits flush inside pipe couplings, with its patented hinge release effectively blocking water flow from one direction while allowing unrestricted flow in the other.

The Afras Press-In Check Valve is a versatile, cost-effective solution designed for various applications, such as regulating water flow in pump loops to ensure efficient circulation. Combining affordability with quality, it offers a budget-friendly alternative to other market options. Its user-friendly design simplifies installation, saving time and effort on plumbing projects.

Product Code: 1.5 inch - **30115**  
2.0 inch - **30102**



## PRESS-IN CHECK VALVE W/ CLEAR PVC COUPLING

Available in 1.5-inch and 2-inch, these couplings seamlessly fit our Press-In Check Valves. They come equipped with security notches to ensure proper placement of the valve and are available in three different shapes for various applications. Made from durable, high-quality clear PVC, they allow for easy inspection and monitoring of flow. Their precision-engineered design ensures a secure, leak-free connection, making them a reliable choice for a variety of fluid control systems.

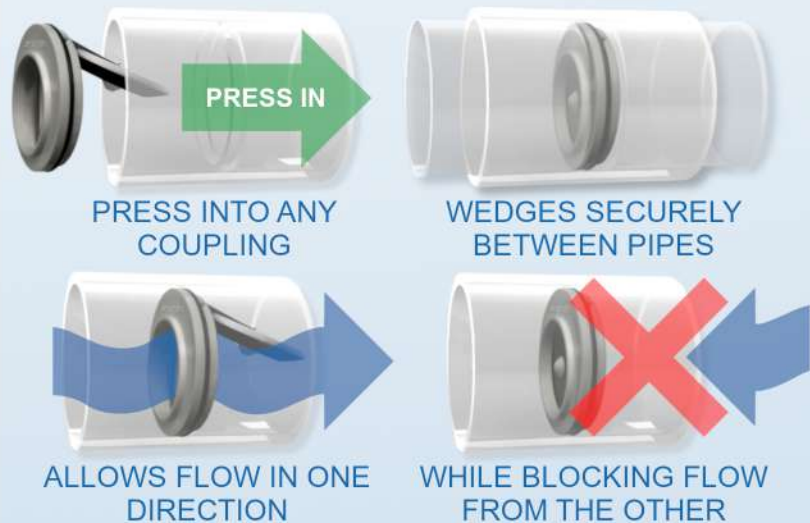


1.5 inch - **31015**  
2.0 inch - **31002**

1.5 inch - **30215**  
2.0 inch - **30202**

1.5 inch - **32015**  
2.0 inch - **32002**

## EASY INSTALL



- Low Pressure Drop
- Positive Seal
- Effortless Assembly





# TOP PRODUCTS



## **afras**<sup>™</sup>

### 3/4 HP Booster Pump

Enhance your pump's performance with the Afras 3/4 hp Booster Pump, a powerhouse designed for efficiency and convenience.

Featuring versatile 0.75" x 0.75" connections, dual voltage capability (115V/12.8A, 230V/6.4A) 60hz, and a total dynamic head of 156 ft, this pump ensures optimal water circulation with a maximum flow rate of 22 GPM.

Its quiet operation adds serenity to your pool experience, while easy installation makes setup a breeze.

CSA listed for quality assurance in the US and Canada, our Booster Pump promises powerful, high-performance water circulation that transforms your pool into an oasis of aquatic luxury.

Product Code: **10110**



parts available individually

PRODUCT	CODE
WET END	11110
IMPELLER	12110
MOTOR	13110
BASE	14110
MECHANICAL SEAL	15110
HOUSING	16110
SEAL PLATE	17110
HARDWARE	18110
DRAIN PLUG	19110

## PRODUCT FEATURES

- Booster pump: 3/4 hp
- Connections: .75"x.75"
- 115/230V 60 hz
- Total dynamic head: 156 ft
- Maximum flow: 22 GPM
- Pool cleaner
- Increased system pressure and circulation
- Equipped with voltage selection switch
- Listed with CSA for use in US and Canada
- Quiet operation
- High performance
- Easy to install

The booster pump is used with the following pressure side cleaners:  
Polaris 180, Polaris 280, Polaris 380, Polaris 480

**MAX LIFT 156ft**

**afras** AF75 booster pump

Power: 3/4 HP

Voltage: 115/230V 60hz (dual voltage)

Max Flow: 1320 GPH

Afras af75 booster pump



# THE END OF DRY RUN



Dry run—a pump operating without water—can cause irreversible damage. With PumpWiz™ from Afras, that risk becomes a thing of the past. The device continuously monitors amp draw and detects changes, automatically shutting off the pump if no water is circulating due to blockages or when the job is complete. This smart automation not only prevents costly repairs but also saves energy, reducing wear and tear on your system and ensuring long-term performance.

**PumpWiz**  
from Afras

## THE END OF DRY RUN

Introducing PumpWiz™ from Afras - a new product that makes your pump automatic!

Protect your pumps and revolutionize your operations with PumpWiz™ from Afras, the next-generation pump automation tool. Designed with innovative, patent-pending technology, PumpWiz™ ensures your pump is always working efficiently and safely.

Efficiency and reliability are at the core of PumpWiz™. Featuring an amp draw sensor and timer, it offers precise control for pumps with a capacity of 0 to 10 AMPs, delivering the peace of mind you need. Whether you're managing irrigation, drainage, or industrial applications, PumpWiz™ provides a dependable, hands-off solution for pump operation.

Take the worry out of pump management. Upgrade to PumpWiz™ from Afras today and experience the benefits of energy savings, pump protection, and effortless automation.

Upgrade your pump control system with PumpWiz™ from Afras today!

Product Code: 40109

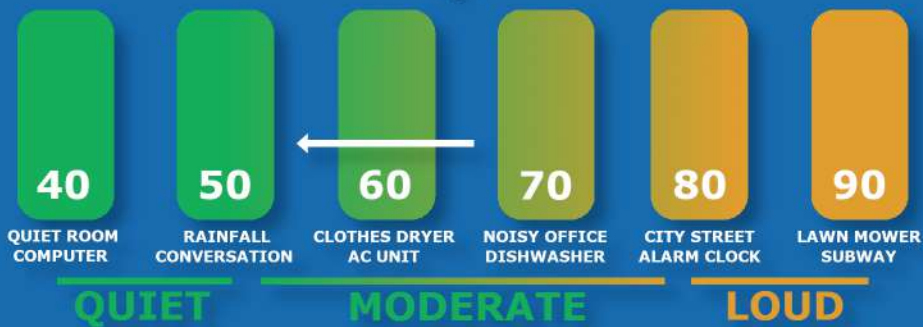
## PRODUCT FEATURES

- Make your pump automatic
- Saves your pump from dry run
- Saves energy
- Shuts off the pump in blockage situations
- Equipped with amp draw sensor and timer
- Compatible with 0 to 10 AMP pumps

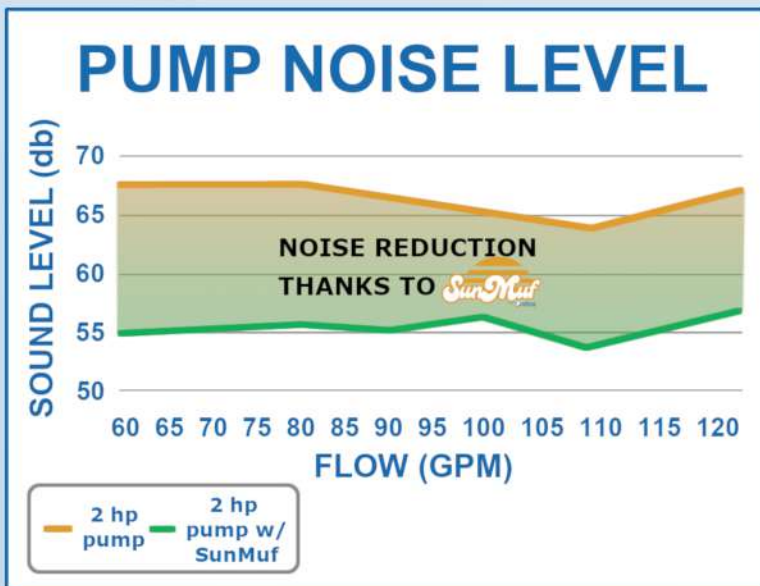




# TOP PRODUCTS



## REDUCES SOUND POLLUTION AND PROTECTS FROM SUN DAMAGE



Heat Resistant



Weather Resistant



UV Resistant



Heavy Duty



No Tools Required



Reduces Sound



Elevate your pool pump protection and reduce operational noise with SunMuf from Afras, an expertly designed enclosure that excels in preserving the integrity of your pool equipment. It shields your pump from sun exposure while minimizing noise levels by up to 10 decibels. Protect your pump while enjoying the peaceful environment of your pool with SunMuf from Afras!

## Key Features -

**SOUND ATTENUATION:** Our fully insulated enclosure effectively reduces pool pump noise levels by 10 decibels, ensuring a more tranquil pool area.

**UV & HEAT PROTECTION:** Crafted from UV-resistant, high-temperature thermoplastic and equipped with flame retardant foam, this enclosure provides comprehensive protection for your pool pump, extending your pump's lifespan.

**EFFORTLESS INSTALLATION:** Assembling and disassembling the enclosure is a straightforward process, requiring no specialized tools. Streamlining maintenance and setup.

**OPTIMIZED VENTILATION:** Our design prioritizes efficient cooling and heat dissipation, complemented by knockout sections for customizable airflow. Proper cooling ensures the continued peak performance of your pool pump.

**TAILORED ADAPTABILITY:** Featuring pre-cut parts and knockout sections, the enclosure can be adjusted to accommodate the specific requirements of your pump's wet, or dry, end section.

## WET END



## DRY END



## OR BOTH!

# TOP PRODUCTS



# RS SERIES

submersible pumps  
from Afras

Upgrade your water management with the Afras RS series submersible pumps. Engineered for durability and efficiency, their corrosion-resistant, glass-reinforced thermoplastic construction and IP68-rated motor ensure reliable performance in pools, irrigation, fountains, and more.



## PRODUCT FEATURES

### Durable Construction:

Non-corrosive, super tough, glass-reinforced thermoplastic motor housing, and pump casing

Long service life

### High-Efficiency Motor:

Equipped with an energy-efficient motor for cost-effective pumping

F-class insulation for enhanced durability

IP68 protection for complete waterproofing, making it suitable for submersion

### Safety and Reliability:

Built-in thermal overload protector to prevent overheating

Double mechanical seals to prevent moisture from entering the motor

### Lightweight and Simplified Design:

Easy to handle and install due to its lightweight construction

### Automatic Operation Options:

RS-A models come with a float switch for automatic operation

RS-E models feature electronic control for automatic operation

**MORE INFO ON PG. 31**

# TOP PRODUCTS

SALT CHLORINATORS



## Salt Chlorinator CFPT

Discover the future of pool maintenance with the CFPT Salt Chlorinator, available in models CFPT20, CFPT30, CFPT40, and CFPT60, each delivering a precise chlorine output ranging from 20 to 60 grams per hour. Easily maintain your pool's ideal salt level at 3000-4000 ppm, while the impressively long 20,000-hour cell lifetime ensures your pool stays pristine for years to come. With a compact design and a lightweight build of approximately 11 kilograms, the CFPT is both space-efficient and user-friendly. It seamlessly pairs with Pentair Intellichlor® IC20, IC40, and IC60 systems, making integration into your existing pool setup a breeze. Plus, enjoy the convenience of self-cleaning through Reverse Polarity and stay informed with digital LED indicators for quick and easy control.



Model NO.: CFPT20K/30K/40K/60K  
 Chlorine output: 20/30/40/60 grams/hour  
 Salt Level Ideal: 3000-4000 PPM (2300-6500 PPM)  
 Cell lifetime: ~20000 hours  
 Compatibility: Pentair Intellichlor® IC20/IC40/IC60  
 Self-cleaning: Yes, Reverse Polarity  
 Control: LED indicators, Digital  
 Carton size: 38x49x30cm one carton one unit  
 Gross Weight: ~11KG

	POOL SIZE	COMPATIBILITY
CFPT20K	20000 GALLON	INTELLICHLOR® IC20
CFPT30K	30000 GALLON	INTELLICHLOR® IC30
CFPT40K	40000 GALLON	INTELLICHLOR® IC40
CFPT60K	60000 GALLON	INTELLICHLOR® IC60

## Replacement Salt Cells

Compatible with CFPT20/40/60 and Pentair Intellichlor® IC20/40/60 systems

	COMPATIBILITY	COMPATIBILITY
31200S	CFPT20K	INTELLICHLOR® IC20
31400S	CFPT40K	INTELLICHLOR® IC40
31600S	CFPT60K	INTELLICHLOR® IC60





# NEW PRODUCTS

LIGHTING BY NEUTERRA

THE FUTURE OF  
SMART LED LIGHTING  
TECHNOLOGY IS HERE

# NEUTerra

SMART LED LIGHTING SOLUTIONS

## ABOVE GROUND POOL SOLUTIONS

### ARIES ABOVE GROUND 360° SMART COLORED RETURN LIGHT

Upgrade your above ground pool with NeuTerra's Aries 360° Return Light - the future of Smart LED technology. This innovative product is designed specifically for the DIY pool owner, with an easy plug & play installation that fits any above ground pool return.

Product Code - ARI-360RL



Not only does the Aries light provide the brightest full color and pure white lighting available, but it also features a full 360° water flow adjustment and vortex flow for better agitated pool cleaning. And with NeuTerra's ecosystem of DIY Smart LED lighting products, you can easily sync and coordinate your lighting to create a party-ready atmosphere with our free app.

### PRODUCT FEATURES

- Easy plug & play installation fits any above ground pool return
- Full 360° water flow adjustment and vortex flow for improved pool cleaning
- Brightest full color and pure white lighting available for above ground pools
- Sync lights and music using the free companion app
- Works seamlessly with NeuTerra's ecosystem of DIY Smart LED lighting products
- 3-year warranty for your peace of mind

### SYNC LIGHTS & MUSIC! COMPATIBLE WITH:





# NEUTerra

## SMART LED LIGHTING SOLUTIONS

### SMART LIGHTING MADE SIMPLE

## IN GROUND POOL SOLUTIONS



### ORION INGROUND NICHELESS SMART POOL & SPA LIGHTS

Introducing NeuTerra Orion Smart Nicheless Inground Light. Sync your Orion light with other NeuTerra smart LED products to create a custom and coordinated lighting experience.

Product Code - POOL (35W) - **ORI-IGSL-18W**  
- SPA (18W) - **ORI-IGPL-35W**

Create the complete backyard experience! Sync all lights for custom shows, colors, and music. Our free app makes it effortless to control ALL of your lights and add additional NeuTerra lights anytime to keep your pool area glowing with endless colors and light shows that sync to the music from any nearby Bluetooth speaker.



### CONTROLLED BY FREE APP

Sync and control all your NeuTerra LED Smart Lights from one single app to create endless colors and programmable shows that sync to the music from any nearby Bluetooth speaker.



### PRODUCT FEATURES

- Easily replaces Pentair's SAM/ SAL (35W/18W) lights
- Industry's first True Smart Light
- Quick connect/disconnect on the back of each light for winterizing or renovations
- 96W 24V/DC smart transformer with WiFi + BLE controller/cord with 4-splitter connections
- 100ft cord with IP68 quick male and female connections
- Smart app and winterizing caps included



# NEW PRODUCTS

LIGHTING BY NEUTERRA

# NEUTerra

## SMART LED LIGHTING SOLUTIONS

## IN GROUND POOL SOLUTIONS

### ARIES INGROUND 360° FLOW SMART WATER RETURN LIGHT

Introducing the first-of-its-kind in the industry – NeuTerra Aries Smart Inground 360° Return Light for pools and spas. The only smart 360° return light on the market.

Product Code - ARI-360IGRL



Sync your Aries light with other NeuTerra smart LED products to create a custom and coordinated lighting experience. Our free app makes it effortless to control ALL of your lights and add additional NeuTerra lights anytime to keep your pool area glowing with endless colors and light shows that sync to the music from any nearby Bluetooth speaker.



### PRODUCT FEATURES

- Industry's First True 1.5 360° Water Return Smart Light
- Quick Connect/Disconnect on the Back of Each Light for Winterizing or Renovations
- Smart App and winterizing caps Included
- 100ft Cord with IP68 Quick Male and Female Connections
- Works seamlessly with NeuTerra's ecosystem of DIY Smart LED lighting products
- 96W 24V/DC Smart Transformer with WiFi + BLE Controller/Cord with 4-Splitter Connections

### SYNC LIGHTS & MUSIC! COMPATIBLE WITH:



### FLEXIBLE

Works in ALL environments and with ALL Above Ground Pools - New and Existing

### CUSTOM

Sync all lights in your outdoor living space with lightshows, colors or to "dance" to music

### SMART

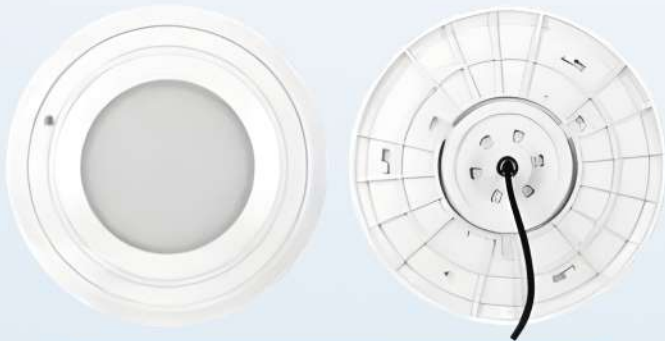
Control lighting through your mobile device



# NEUTerra

SMART LED LIGHTING SOLUTIONS

## IN GROUND POOL SOLUTIONS



### VENUS INGROUND NICHELESS 1.5 SMART POOL & SPA LIGHT

Introducing NeuTerra Venus Smart Nicheless 1.5 Inground Light Sync your Venus light with other NeuTerra smart LED products to create a custom and coordinated lighting experience.

Product Code - POOL (35W) - **VEN-IGPL-35W**  
- SPA (18W) - **VEN-IGPL-18W**

Create the complete backyard experience! Sync all lights for custom shows, colors, and music. Our free app makes it effortless to control ALL of your lights and add additional NeuTerra lights anytime to keep your pool area glowing with endless colors and light shows that sync to the music from any nearby Bluetooth speaker.



#### CONTROLLED BY FREE APP

Sync and control all your NeuTerra LED Smart Lights from one single app to create endless colors and programmable shows that sync to the music from any nearby Bluetooth speaker.



### PRODUCT FEATURES

- Easily replaces Pentair's SAM/ SAL (35W/18W) lights
- Industry's First True 1.5 Wall Fitting Smart 35W Light
- Quick connect/disconnect on the back of each light for winterizing or renovations
- 96W 24V/DC smart transformer with WiFi + BLE controller/cord with 4-splitter connections
- 100ft cord with IP68 quick male and female connections
- Smart app and winterizing caps included



# NEW PRODUCTS

VALVES & CHECK VALVES

## PVC REDUCER 2.5" - 2"

This PVC reducer coupling provides a watertight connection to transition from a 2.5-inch schedule 40 pipe down to a 2-inch schedule 40 pipe. Made of durable, corrosion-resistant PVC, it ensures a secure and lasting fit.



2.5 inch/2 inch - 30252



## CPVC CHECK VALVE

Crafted from durable CPVC. Compatible with 2-inch and 2.5-inch PVC/CPVC pipes. The clear top allows for easy flow inspection. Engineered for straight, one-way flow and to prevent backflow. The Teflon seal ensures a secure fit, reducing maintenance with no need for lubrication.

2 inch - 40201A

## PRESS IN CHECK VALVE

This check valve seamlessly fits flush inside pipes, with its patented hinge release effectively blocking water flow from one direction while allowing unrestricted flow in the other.



1.5 inch - 30115  
2 inch - 30102

## IN-LINE CHECK VALVE

Designed for optimal water flow control. Available in 1.5-inch and 2-inch, this check valve seamlessly fits flush inside pipes, with its patented hinge release effectively blocking water flow from one direction while allowing unrestricted flow in the other.



1.5 inch - 30315  
2 inch - 30302

## CLEAR PVC PIPE W/ CHECK VALVE

Available in 1.5-inch and 2-inch, this check valve seamlessly fits flush inside our clear PVC pipes. Its patented hinge release effectively blocks water flow from one direction while allowing unrestricted flow in the other.



1 inch - 31015  
2 inch - 31002



1 inch - 30215  
2 inch - 30202



1 inch - 32015  
2 inch - 32002



## TEFLON SEAL VALVES

Crafted from durable CPVC. Compatible with 2-inch and 2.5-inch PVC/CPVC pipes. The Teflon seal ensures a secure fit, reducing maintenance with no need for lubrication. Automation ready with included security clips. Available in 2 port and 3 port.

2 port - 40201  
3 port - 40301



## 1.5 UPVC BALL VALVE

1.5 inch inlet and outlet with threading on both sides. UPVC construction with heavy duty design.

1.5 inch - 50115

# NEW PRODUCTS



## WIRELESS SPA VACUUM

This cordless pool vacuum is a top performer with customers, who love its freedom and power. The automatic operation and two-hour runtime make pool cleaning effortless. A key selling point is the effortless operation. The automatic immersion detector means it starts working the moment it hits the water, making the cleaning process intuitive and simple. With a rapid charge providing up to two hours of consistent runtime, it meets the demand for both quick clean-ups and thorough maintenance. This combination of user-friendly features translates directly into a product that customers love and recommend.

PRODUCT CODE: 80024



## WATERFALL PUMP MOTOR

This waterfall pump motor operates on both 115V and 230V, delivering powerful flow while cutting energy costs by 10%. Its quiet operation and Class F insulation ensure reliable, peaceful performance that customers trust. The robust 1725 RPM motor guarantees the powerful visually captivating flow that is essential for any water feature, while its significant energy savings directly addresses the demand for cost-effective and eco-conscious products.

PRODUCT CODE: 70310

1725 RPM | 230/115V 60Hz | 5.8/11.4 AMP Class F  
Compatible with Pentair AF180, AFP150, AFP180  
Compatible with Century 355222S

**We offer free shipping on bulk orders.  
Orders with a total of over \$5000 qualify for free  
nationwide shipping.**

**Contact us for more details.**



# MAIN DRAIN COVERS

## TOP SELLER

### Afras Anti-Vortex ABS Drain Cover - 7.375 Inch

Featuring an anti-vortex design, this product ensures safety and optimal water circulation. Comes with a 7.375-inch diameter cover and a 7.75-inch diameter mounting ring, supported by a precise 6.78-inch center distance between mounting screws. In addition to its safety features, this product is fully VGB compliant and certified. It includes 2 mounting screws and is crafted from durable ABS plastic, guaranteeing long-lasting performance.

	WHITE	BLACK	TAN	LIGHT GREY	DARK GREY
<b>COVER &amp; RING</b>	<b>10064W</b>	<b>10064BK</b>	<b>10064TAN</b>	<b>10064LTGY</b>	<b>10064DKGY</b>
<b>COVER ONLY</b>	<b>11064W</b>	<b>11064BK</b>	<b>11064TAN</b>	<b>11064LTGY</b>	<b>11064DKGY</b>
<b>RING ONLY</b>	<b>12051W</b>	<b>12051BK</b>	<b>12051TAN</b>	<b>12051LTGY</b>	<b>12051DKGY</b>



### Afras Anti-Vortex ABS Drain Cover - 11.125 Inch

Featuring an anti-vortex design, this product ensures safety and optimal water circulation. Comes with a 11.125-inch diameter cover and a 12-inch diameter ring. Supported by a precise 10.48-inch center distance between ring mounting screws, with additional 7.375-inch mounting holes. In addition to its safety features, this product is fully VGB compliant and certified. It includes 6 mounting screws for various mounts and is crafted from durable ABS plastic, guaranteeing long-lasting performance.

	WHITE	BLACK	TAN	LIGHT GREY	DARK GREY
<b>COVER &amp; RING</b>	<b>10064AWR</b>	<b>10064ABKR</b>	<b>10064ATANR</b>	<b>10064ALTGYR</b>	<b>10064ADKGYR</b>
<b>COVER ONLY</b>	<b>10064AW</b>	<b>10064ABK</b>	<b>10064ATAN</b>	<b>10064ALTGY</b>	<b>10064ADKGY</b>
<b>RING ONLY</b>	<b>11064AWR</b>	<b>11064ABKR</b>	<b>11064ATANR</b>	<b>11064ALTGYR</b>	<b>11064ADKGYR</b>



### Afras Anti-Vortex Drain Cover & Plate - 12x12 Inch

Featuring an anti-vortex design, this product ensures safety and optimal water circulation. Comes with a 11.125-inch diameter cover and a 12x12-inch mounting plate, supported by a precise 10.48-inch center distance between mounting screws. In addition to its safety features, this product is fully VGB compliant and certified. It includes 6 mounting screws for various mounts and is crafted from durable ABS plastic, guaranteeing long-lasting performance. Available only in white.

Product Code: **10064ACW**  
Mount Plate Only: **11064ACW**



### Afras High Capacity Sumpless Cover -11.125 Inch

Featuring an anti-vortex design, this product ensures safety and optimal water circulation. Comes with a 11.125-inch diameter cover sumpless mounting ring, supported by a precise 10.48-inch center distance between mounting screws. In addition to its safety features, this product is fully VGB compliant and certified. Available only in white.

Product Code: **10064AWD**



# MAIN DRAIN COVERS



## Sub Main Drain for Concrete Pools

This essential pool accessory is crafted from heavy-duty ABS plastic, guaranteeing durability and resistance to the harshest pool conditions. Included with the drain is a 7.375 inch anti-vortex cover and two securing screws, ensuring smooth water flow and easy installation. Available in a variety of sizes and colors.

	1 1/2 INCH BOTTOM	2 INCH BOTTOM
1 1/2 INCH SIDE	10058A	10058C
2 INCH SIDE	10058D	10058B

	WHITE	BLACK	GREY
10058A	10058AAW	10058AABK	10058AAGY
10058B	10058BAW	10058BABK	10058BAGY
10058C	10058CAW	10058CABK	10058CAGY
10058D	10058DAW	10058DABK	10058DAGY



## Sub Main Drain for Vinyl and Fiberglass Pools

This essential pool accessory is crafted from heavy-duty ABS plastic, guaranteeing durability and resistance to the harshest pool conditions. Included with the drain is a 7.375 inch anti-vortex cover and two securing screws, ensuring smooth water flow and easy installation. Available in white in a variety of sizes.

	1.5 INCH BOTTOM	2.0 INCH BOTTOM
1.5 INCH SIDE	10052AA	10052CA
2.0 INCH SIDE	10052DA	10052BA



## Sub Main Drain - Drain Only

This essential pool accessory is crafted from heavy-duty ABS plastic, guaranteeing durability and resistance to the harshest pool conditions. Available in a variety of sizes and colors.

	1.5 INCH BOTTOM	2.0 INCH BOTTOM
1.5 INCH SIDE	11058A	11058C
2.0 INCH SIDE	11058D	11058B

	WHITE	BLACK	GREY
11058A	11058AW	11058ABK	11058AG
11058B	11058BW	11058BBK	11058BG
11058C	11058CW	11058CBK	11058CG
11058D	11058DW	11058DBK	11058DG





# ABS FITTINGS

## TOP SELLER

### Afras Directional Flow Inlet Fitting - 1 1/2" Thread

Eyeball fittings are designed to be aimed in the same direction, to create a circular flow pattern around the pool, or a slight surface ripple to aid in moving debris toward the skimmers, or can be aimed to deeper areas that need more circulation. Use smaller eyeball sizes closer to the pump, and larger diameter eyeballs further away, to balance flow among all wall returns. 1 1/2" MIP threading. Sizes below are size of opening.

	WHITE	BLACK	TAN	LIGHT GREY	DARK GREY
1 INCH	10050EW	10050EBK	10050ETAN	10050ELTGY	10050EDKGY
3/4 INCH	10050DW	10050DBK	10050DTAN	10050DLTGY	10050DDKGY
3/8 INCH	10050BW	10050BBK	10050BTAN	10050BLTGY	10050BDKGY
1/8 INCH	10050GW	10050GBK	10050GTAN	10050GLTGY	10050GDKGY



### Afras Directional Flow Inlet Fitting - Sweep

Eyeball fittings are designed to be aimed in the same direction, to create a circular flow pattern around the pool, or a slight surface ripple to aid in moving debris toward the skimmers, or can be aimed to deeper areas that need more circulation. 1 1/2" MIP threading. Available in a variety of colors.

	WHITE	BLACK	TAN	LIGHT GREY	DARK GREY
SWEEP	10050AW	10050ABK	10050ATAN	10050ALTGY	10050ADKGY



### Afras Directional Flow Inlet Fitting - Blank

Eyeball fittings are designed to be aimed in the same direction, to create a circular flow pattern around the pool, or a slight surface ripple to aid in moving debris toward the skimmers, or can be aimed to deeper areas that need more circulation. 1 1/2" MIP threading. Available in a variety of colors.

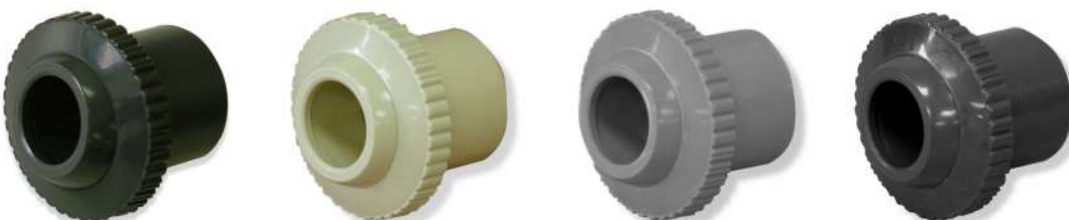
	WHITE	BLACK	TAN	LIGHT GREY	DARK GREY
BLANK	10050FW	10050FBK	10050FTAN	10050FLTGY	10050FDKGY



### Afras Slip Jet Return Fitting

Eyeball fittings are designed to be aimed in the same direction, to create a circular flow pattern around the pool, or a slight surface ripple to aid in moving debris toward the skimmers, or can be aimed to deeper areas that need more circulation. 1" Socket, fits inside of 1 1/2" pipe. Available in a variety of colors.

	WHITE	BLACK	TAN	LIGHT GREY	DARK GREY
1 INCH	10072EW	10072EBK	10072ETAN	10072ELTGY	10072EDKGY
3/4 INCH	10072DW	10072DBK	10072DTAN	10072DLTGY	10072DDKGY





## Afras Slip Jet Directional Orifice Return Flush

Eyeball fittings are designed to be aimed in the same direction, to create a circular flow pattern around the pool, or a slight surface ripple to aid in moving debris toward the skimmers, or can be aimed to deeper areas that need more circulation. Use smaller eyeball sizes closer to the pump, and larger diameter eyeballs further away, to balance flow among all wall returns. 1" socket, fits inside 1 1/2" pipe. Sizes below are size of opening. Available in Directional and Fixed (F).

	WHITE	BLACK	TAN	LIGHT GREY	DARK GREY
1 INCH	10070EW	10070EBK	10070ETAN	10070ELTGY	10070EDKGY
3/4 INCH	10070DW	10070DBK	10070DTAN	10070DLTGY	10070DDKGY
1 INCH (F)	10070EWF	10070EBKF	10070ETANF	10070ELTGYF	10070EDKGYF
3/4 INCH (F)	10070DWF	10070DBKF	10070DTANF	10070DLTGYF	10070DDKGYF



## Afras Extension Return Fitting

Simply thread into existing return fitting. Full thread depth to allow vac port fittings to seal flush. Gives pool the traditional look customers expect. 1 1/2" MIP threading.

	WHITE	BLACK	TAN	LIGHT GREY	DARK GREY
1 INCH	10071EW	10071EBK	10071ETAN	10071ELTGY	10071EDKGY
3/4 INCH	10071DW	10071DBK	10071DTAN	10071DLTGY	10071DDKGY



## Afras Extension Return Fitting Socket

Simply thread into existing return fitting. Full thread depth to allow vac ports fittings to seal flush. Gives pool the traditional look customers expect. 1 1/2" MIP threading.

	WHITE	BLACK	TAN	LIGHT GREY	DARK GREY
SOCKET	10071W	10071BK	10071TAN	10071LTGY	10071DKGY



## Afras Extension Return Fitting Base

Slip fit. Fits inside 1 1/2" pipe or slips over 1" pipe.

	WHITE	BLACK	TAN	LIGHT GREY	DARK GREY
BASE	11070W	11070BK	11070TAN	11070LTGY	11070DKGY



## Afras Extension Fitting Adapter

Extension fitting design for re-plastering. Large flat front to achieve a clean look once installed. Available in 1 1/2" x 1" Slip fit or 1 1/2" MIP threaded.

	WHITE	BLACK	LIGHT GREY
THREADED	10048W	10048BK	10048TAN
SLIP FIT	10049W	10049BK	10049TAN





# ABS FITTINGS

## Afras Rotating Therapy Jet 1 1/2" Threaded

Our therapy jets provide progressive resistance for assisted and resistive exercises, allowing for increased conditioning, strength and flexibility. Featuring a stainless steel ball bearing race that creates a smooth and therapeutic spinner action, perfect for any inground spa.

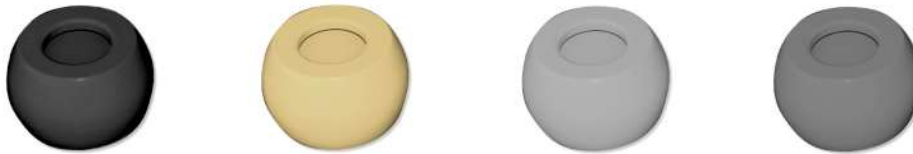
	WHITE	BLACK	TAN	LIGHT GREY	DARK GREY
CODE	10090W	10090BK	10090TAN	10090LTGY	10090DKGY



## Replacement Eyeballs

Use smaller orifice eyeball sizes closer to the pump, and larger diameter eyeballs further away to balance flow among all wall returns. Use blank for nonadjustable flow.

	WHITE	BLACK	TAN	LIGHT GREY	DARK GREY
1 INCH	12050EW	12050EBK	12050ETAN	12050ELTGY	12050EDKGY
3/4 INCH	12050DW	12050DBK	12050DTAN	12050DLTGY	12050DDKGY
3/8 INCH	12050BW	12050BBK	12050BTAN	12050BLTGY	12050BDKGY
1/8 INCH	12050GW	12050GBK	12050GTAN	12050GLTGY	12050GDKGY
BLANK	12050FW	12050FBK	12050FTAN	12050FLTGY	12050FDKGY
SWEEP	12050AW	12050ABK	12050ATAN	12050ALTGY	12050ADKGY



## Replacement Retainer Rings

Easily threads in to secure the eyeball to the fitting. Available in five colors.

	WHITE	BLACK	TAN	LIGHT GREY	DARK GREY
RING	12050W	12050BK	12050TAN	12050LTGY	12050DKGY



## Afras Return Bubbler

Designed to create a uniform and consistent bubbles. Flat top to be flush with pool/sap floor or walls. 1" Socket or fits over 1 1/2" pipe. Available in five colors.

	WHITE	BLACK	TAN	LIGHT GREY	DARK GREY
BUBBLER	10068W	10068BK	10068TAN	10068LTGY	10068DKGY



## ABS Vacuum Fitting for Concrete Pools

Large flat front to achieve a clean look in concrete pools once installed. 2" MIP X 1 1/2" FIP. 1 1/2" Pipe Socket. Available in five colors.

	WHITE	BLACK	TAN	LIGHT GREY	DARK GREY
FITTING	10054AW	10054ABK	10054ATAN	10054ALTGY	10054ADKGY





## FIP Inlet/Outlet Fitting for Above Ground or Vinyl Liner Pools

The ideal plumbing solution for Above Ground or Vinyl Liner Pools. Engineered for durability and compatibility, this 1 1/2" Inlet/Outlet Fitting with a plastic nut is designed to streamline your pool plumbing system with ease. This fitting accommodates 1 1/2" piping. Product Code: **10055WCH**



## FIP Inlet/Outlet Fitting with Brass Locknut

1 1/2" inlet/outlet fitting with brass nut. Fits 1 1/2" piping. Used For vinyl fiberglass, steel, wood and fiber panel pools. Available in white only. Product Code: **10056**



## FIP Inlet/Outlet Fitting for Vinyl, Fiberglass and Steel Pools

1 1/2" inlet/outlet fitting. Fits 1 1/2" piping. Available in white only. Product Code: **10055**



	GASKET	FACE PLATE	SCREWS	BODY
PRODUCT	11055	12055	13055	14055



11055



12055



13055



14055

## Reducer PVC

Reducer bushing 2" x 1 1/2" PVC. Available in white only. Product Code: **10061**



## 1 1/2" ABS Threaded Plug

Used to plug 1 1/2" fitting or pipe. Available with O-Ring or Gasket in white only.

	PLUG WITH O RING	PLUG WITH GASKET
PRODUCT	10059WOCH	10059WGCH



10059WOCH



10059WGCH

## Test Plug

Available in two sizes in black only.

	1 1/2"	2"
PRODUCT	10059	10060



10059



10060

## Rubber Winterizing Plug

Winterizing plugs designed to absorb the expansion of winter freeze-up in skimmers. It does not require you to leave your pool drained below the skimmer during the winter. Use one winter plug in each swimming pool return inlet and main drain. Available in two sizes.

	1 1/2"	2"
PRODUCT	10095L	10095M





# ABF BRASS

BRASS DRAINS AND FITTINGS

## Adjustable Chrome Plated Brass FIP Inlet

This 1 1/2" Female Iron Pipe (FIP) fitting ensures a secure and seamless connection to standard plumbing systems, making it an ideal choice for a wide range of applications. What sets this inlet apart is its innovative adjustable flow feature, allowing you to customize water flow to suit your specific requirements

Product Code: **10028**

## Main Drain Chrome Plated Brass Drain Cover

This 1 1/2" FIP connection ensures a seamless fit with standard plumbing systems, making it a versatile choice for various applications. The chrome-plated finish not only adds a touch of sophistication to your plumbing fixtures but also provides excellent corrosion resistance, ensuring long-lasting durability.

Product Code: **10039A**

## Vacuum Wall Fitting 1 1/2"

1 1/2" Male Iron Pipe Size (M.I.P.S.), Chrome Plated Brass (C.P.B.)—the epitome of reliability and functionality for your system. Engineered with precision, this fitting is designed to meet the highest standards, ensuring optimal performance in both residential and commercial applications.

Product Code: **10016**

## Afras Sight Glass - 1 1/2"

These glasses are used to provide a means to view the level of fluid in a container or tank. Also offered in a variety of combinations of metal, plastic and glass, to accommodate different types of fluids and tank pressures.

Product Code: **10020**

## Afras In-Line Sight Glass - 1 1/2"

The Afras In-Line Sight Glass, a brass solution for seamless fluid level monitoring within your plumbing pipelines. Specifically designed for in-line installation, this sight glass offers a clear window into the fluid levels of your pipes, ensuring efficient management.

Product Code: **10038**

## Afras In-Line Sight Glass - 1 1/2"

### White ABS Slip Fit

A solution designed for in-line installation on your pipes, offering fluid level monitoring with the added benefits of ABS plastic construction and a slip fit design. This sight glass redefines precision and adaptability in plumbing applications.

Product Code: **10062**

## Afras In-Line Sight Glass - 1 1/2"

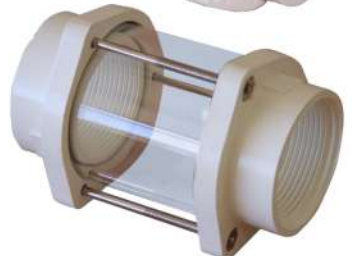
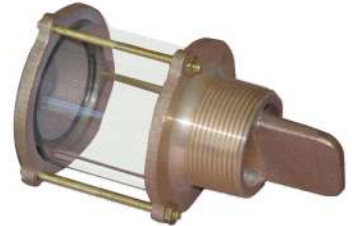
### White ABS Threaded

A solution designed for in-line installation on your pipes, offering fluid level monitoring with the added benefits of ABS plastic construction and a threaded design. This sight glass redefines precision and adaptability in plumbing applications.

Product Code: **10063**

## Afras Sight Glass Parts

PRODUCT	GASKET (X2)	NUTS AND BOLT (X3)	GLASS ONLY
	11020	12020	13020





## Brass Wedge Anchor with Integral Flange for 1.9" Tubing

Crafted from high-quality brass, the wedge anchor offers unparalleled strength and corrosion resistance, making it an ideal choice for pool environments. The integral flange design adds an extra layer of stability, guaranteeing a reliable connection between the anchor and your 1.9" pool ladder tubing. Depth 4"

Product Code: 10029

PRODUCT	BOLT 11029	WASHER 12029	WEDGE 13029
---------	---------------	-----------------	----------------



## Rope Eye Hook

Crafted with precision from Chrome Plated Brass (C.P.B.), this rope eye hook holder is designed for durability. Comes with washer and nut.

Product Code: 10004

PRODUCT	NUT 11004	WASHER 12004	GASKETS (X2) 13004	ROPE HOOK 11003
---------	--------------	-----------------	-----------------------	--------------------



## Rope Eye Hook Holder C.P.B. with Anchor & Plug

Rope eye hook holder C.P.B. Comes in complete assembly with anchor and plug or sold as individual parts.

Product Code: 10003

PRODUCT	ANCHOR 12003	PLUG 13003	ROPE HOOK 11003
---------	-----------------	---------------	--------------------



## Rope Hook For C.P.B

Comes complete with two screws, ensuring a secure and hassle-free installation process. The Chrome Plated Brass construction adds a sleek and polished look to your space while guaranteeing resistance to corrosion. Available in a variety of sizes.

PRODUCT	3/8" 10002	1/2" 10006	3/4" 10026
---------	---------------	---------------	---------------



## External Rope Eye Hook Holder C.P.B

Measuring at 5 1/4" length, this hook holder secures ropes effectively. Its surface coping mount design simplifies installation, making it an ideal choice for both professional installers and DIY enthusiasts.

Product Code: 10005



## Brass Cup Anchor with Integral Cross Bar

Cup anchors are designed to be installed into a concrete swimming pool wall and are used primarily for securing swim racing lanes and pool safety ropes, but may be used with other pool equipment also.

Product Code: 10025



## Reinforced ABS Cup Anchor

Cup anchors are designed to be installed into a concrete swimming pool wall and are used primarily for securing swim racing lanes and pool safety ropes, but may be used with other pool equipment also. ABS with steel reinforced cross bar.

PRODUCT	WHITE 10066W	BLACK 10066BK	TAN 10066TAN	LIGHT GREY 10066LTGY	DARK GREY 10066DKGY
---------	-----------------	------------------	-----------------	-------------------------	------------------------





# VACUUMS

## NEW Afras Wireless Spa Vacuum

Introducing the new Afras Cordless Pool and Spa Vacuum – a hassle-free solution for debris removal. With a cordless design and a powerful motor, it can quickly clean your pool or spa from small leaves to fine silt. It's easy to use with an automatic immersion detector, and its quick clean-up system and mesh filter ensure thorough cleaning. With a two-hour charge providing up to two hours of cleaning time, this vacuum is an efficient and convenient choice for pool and spa maintenance.

Product Code: **80024**

Package Includes:



## Afras Vakpump Pool

Introducing the Vakpump Pool Vacuum Cleaner: Dive into crystal-clear waters with ease! The Vakpump effortlessly sucks up debris, leaves, and dirt, keeping your pool pristine and ready for endless summertime fun.

Product Code: **10300**

## Afras Vakpump Spa

Introducing the Vakpump Spa Vacuum Cleaner: Effortlessly maintain your spa oasis as it delicately cleans away dirt and impurities. Unwind in perfectly clean waters and embrace the ultimate spa experience with the Vakpump Spa.

Product Code: **10200**

## Afras Vakpump Replacement Parts

Explore our range of high-quality Vakpump parts, designed to keep your pool and spa vacuum running at peak performance. From replacement bags and brush heads to valves and more, our genuine Vakpump parts ensure your cleaning equipment stays in top shape. Get the most out of your Vakpump and maintain your pool and spa effortlessly with our reliable and durable replacement parts.

PRODUCT	HANDLE	INLET VALVE	BRUSH	BAG	OUTLET VALVE
	11201	11203	11205	11204	11202



10009



10013

## Replacement Heads for Pool Vacuum CPB

Upgrade your pool cleaning experience with our Replacement Pool Vacuum Cleaner Heads, available in two options: the efficient 3-wheel and the stable 4-wheel design. Crafted from durable chrome-plated brass, these heads are built to withstand the rigors of pool maintenance. Ensure a thorough and reliable clean for your pool with these premium replacement heads, designed to make your pool maintenance a breeze.

Product Code: 3 Wheel - **10009** 4 Wheel - **10013**



## Salt Chlorinator CFPT

Discover the future of pool maintenance with the CFPT Salt Chlorinator, available in models CFPT20, CFPT30, CFPT40, and CFPT60, each delivering a precise chlorine output ranging from 20 to 60 grams per hour. Easily maintain your pool's ideal salt level at 3000-4000 ppm, while the impressively long 20,000-hour cell lifetime ensures your pool stays pristine for years to come. With a compact design and a lightweight build of approximately 11 kilograms, the CFPT is both space-efficient and user-friendly. It seamlessly pairs with Pentair Intellichlor® IC20, IC40, and IC60 systems, making integration into your existing pool setup a breeze. Plus, enjoy the convenience of self-cleaning through Reverse Polarity and stay informed with digital LED indicators for quick and easy control.

Model NO.: CFPT20K/30K/40K/60K  
 Chlorine output: 20/30/40/60 grams/hour  
 Salt Level Ideal: 3000-4000 PPM (2300-6500 PPM)  
 Cell lifetime: ~20000 hours  
 Compatibility: Pentair Intellichlor® IC20/IC40/IC60  
 Self-cleaning: Yes, Reverse Polarity  
 Control: LED indicators, Digital  
 Carton size: 38x49x30cm one carton one unit  
 Gross Weight: ~11KG



	POOL SIZE	COMPATIBILITY
CFPT20K	20000 GALLON	INTELLICHLOR® IC20
CFPT30K	30000 GALLON	INTELLICHLOR® IC30
CFPT40K	40000 GALLON	INTELLICHLOR® IC40
CFPT60K	60000 GALLON	INTELLICHLOR® IC60

## Replacement Salt Cells

An Afras aftermarket salt cell replaces your old Pentair® 520555 salt cell for less and is a direct plumbing and electrical replacement for the Pentair® Intellichlor® IC40®

Afras replacement cell comes with an onboard digital controller that allows you to adjust chlorine output with a tap of a button, and displays the actual salinity in PPM of the pool.

The Afras IRCF salt cell uses common table salt to effectively and automatically produce chlorine a pool needs. It provides the same sanitation performance as chlorine additives without the drawbacks of chlorine handling.

- Water and dissolved salt flow through the generator cell.
- Through electrolysis it is converted into chlorine.
- Chlorinated water is returned to the pool. Once the chlorine has finished treating the pool, it reverts back into the salt and the cycle repeats.
- Comes with the unions and O-rings.your pool maintenance, bringing crystal-clear water within reach.

Compatible with CFPT20/40/60 and Pentair Intellichlor® IC20/40/60 systems

	COMPATIBILITY	COMPATIBILITY
31200S	CFPT20K	INTELLICHLOR® IC20
31400S	CFPT40K	INTELLICHLOR® IC40
31600S	CFPT60K	INTELLICHLOR® IC60





# PUMPS

## SUBMERSIBLE PUMPS

Built to last, RS Series pumps feature non-corrosive, glass-reinforced thermoplastic motor housings, pump casings, and impellers. With a high-efficiency motor, IP68 protection, F-class insulation, and a built-in thermal overload protector, they deliver consistent, reliable performance. Double mechanical seals prevent moisture intrusion, ensuring safety and longevity. Their lightweight yet robust design offers high efficiency and a long service life, making them a cost-effective solution.

**RSA** features a float switch for automatic operation, ideal for hassle-free water management.

**RSE** includes electronic control for precise operation, perfect for accuracy-driven applications.

**RSP** comes with a stabilizing base that functions as a pool cover pump, ideal for draining rainwater or snow from pool covers.

Suitable for sump pits, garden spraying, fountains, waterfalls, toilets, laundry, car washes, irrigation, pools, spas, koi ponds, and more, our pumps handle a wide range of applications with ease. Experience the reliability and versatility of our pumps, designed to meet all your water management needs.

Specifications: 115V 60Hz, 1.5" or 1.9" OD hose/tube connections, 2/3/4/5 threads, and 304 or 316L (marine grade) materials).

### Afras RS100 1/6HP Submersible Pump

Max. flow rate 1200 GPH  
Max. head 20.5 ft

	PUMP ONLY	ELECTRONIC CONTROL	FLOAT SWITCH
<b>PRODUCT</b>	<b>RS100</b>	<b>RS100E</b>	<b>RS100A</b>
<b>WITH BASE</b>	<b>RS100P</b>	<b>RS100PE</b>	<b>RS100PA</b>



### Afras RS200 1/4HP Submersible Pump

Max. flow rate 2000 GPH  
Max. head 21.5 ft

	PUMP ONLY	ELECTRONIC CONTROL	FLOAT SWITCH
<b>PRODUCT</b>	<b>RS200</b>	<b>RS200E</b>	<b>RS200A</b>
<b>WITH BASE</b>	<b>RS200P</b>	<b>RS200PE</b>	<b>RS200PA</b>



FLOAT SWITCH & STRAINER

### Afras RS300 1/3HP Submersible Pump

Max. flow rate 2800 GPH  
Max. head 23 ft

	PUMP ONLY	ELECTRONIC CONTROL	FLOAT SWITCH
<b>PRODUCT</b>	<b>RS300</b>	<b>RS300E</b>	<b>RS300A</b>
<b>WITH BASE</b>	<b>RS300P</b>	<b>RS300PE</b>	<b>RS300PA</b>

### Afras RS400 1/2HP Submersible Pump

Max. flow rate 3500 GPH  
Max. head 29.5 ft

	PUMP ONLY	ELECTRONIC CONTROL	FLOAT SWITCH
<b>PRODUCT</b>	<b>RS400</b>	<b>RS400E</b>	<b>RS400A</b>
<b>WITH BASE</b>	<b>RS400P</b>	<b>RS400PE</b>	<b>RS400PA</b>



STABILIZER BASE

### Afras Submersible Pump Parts

	RS100/RS200	RS300	RS400
<b>SCREEN RAISED BASE</b>	18101	18101	-
<b>STRAINER RAISED BASE</b>	21101R	-	14103
<b>HOSE ADAPTER</b>	16101 (3/4")	17103E (1.5")	17104E (2")
<b>CABLE 25 FT</b>	13101	11104	11104
<b>CABLE 40 FT</b>	-	19104	19104
<b>IMPELLER</b>	-	11102	11103
<b>MECHANICAL SEAL</b>	-	-	15103

# PUMPS

SUBMERSIBLE PUMPS



## AFRAS SUBMERSIBLE PUMPS

Non-corrosive, super tough, glass reinforced thermoplastic motor housing, pump casing and impeller.

High efficiency motor with IP 68 protection and F class insulation for cost effective, and safe, pumping.

Built-in thermal overload protector protects your pump from overheating.

High reliability with double mechanical seals that prevents moisture from getting into the motor.

Light-weight and simplified construction with robust design for long service life.

Equipped with float switch in RS-A models and Electronic Control in RS-E for automatic operation.

## RS300



## RS100



## APPLICATIONS

**Sump-Pit and Basement:** Keep your basement dry and sump-pit efficiently drained, safeguarding your property from potential water damage.

**Garden and Fountain:** Transform your garden into a lush oasis with our pumps that effortlessly circulate water, ensuring optimal hydration for your plants.

**Waterfall:** Our submersible pumps provide the necessary power and reliability to craft stunning waterfalls that captivate the senses.

**Pool and Spa:** Our submersible pumps are designed to handle the demands of water circulation and filtration, ensuring a clean and inviting aquatic experience.

**Portable Usages:** The compact and portable design ensures convenience and ease of use wherever you need them.



# PUMPS

VARIABLE SPEED PUMPS



**AVAILABLE IN 1.5HP, 2HP & 3HP**

PRODUCT CODE

FB2015VS

FB2020VS

FB2030VS





# NEW AFRAS VARIABLE SPEED PUMPS

## Key Pump Features

**SELF-PRIMING:** Quick and easy startup with adjustable priming mode for optimal performance with a simple user interface and an onboard time schedule for easy and automated operation

**EXTREMELY QUIET OPERATION:** Integrated volute and pot reduce hydraulic noise for a quieter, more efficient pump

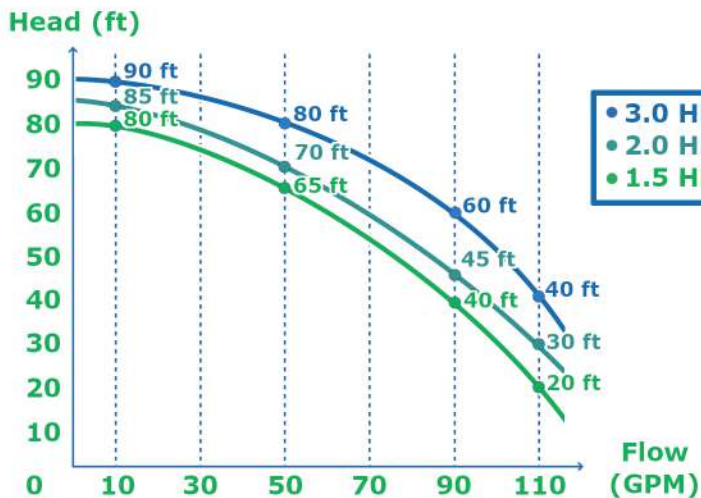
**SEE-THROUGH LID:** Easy inspection of strainer basket for optimal performance with a programmable quick clean mode and a strainer cover kit for easy cleaning and maintenance

**IPX6 CERTIFIED UV:** Rain-proof enclosure for durability in all weather conditions with diagnostic alarm display for easy troubleshooting

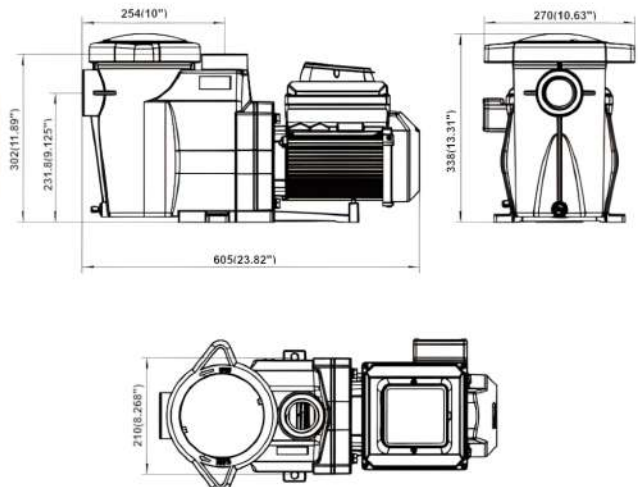
**SUPER-DUTY TEFC:** Totally enclosed fan cooled motor for long life and reliability with active power factor correction for energy efficiency

**ETLUS/CETL:** Listed for safety and compliance

## DYNAMIC HEAD VS GPM



## PUMP DIMENSIONS





# PUMPS

BOOSTER PUMPS

## Afras 3/4 HP Booster Pump

Enhance your pump's performance with our Booster Pump 3/4 hp, a powerhouse designed for efficiency and convenience. Featuring versatile 0.75" x 0.75" connections, dual voltage capability (115V/12.8A, 230V/6.4A) 60hz, and a total dynamic head of 156 ft, this pump ensures optimal water circulation with a maximum flow rate of 22 GPM. Its quiet operation adds serenity to your pool experience, while easy installation makes setup a breeze. CSA listed for quality assurance in the US and Canada, our Booster Pump promises powerful, high-performance water circulation that transforms your pool into an oasis of aquatic luxury.  
Product Code: **10110**



## Afras 3/4 HP Booster Pump Wet End

Repair or enhance your pump with the wet end of our Booster Pump 3/4 hp. Meticulously engineered for seamless integration and optimal water circulation, this wet end features versatile 0.75" x 0.75" connections, ensuring adaptability to a range of setups. Crafted with precision, the wet end includes essential components such as the impeller, volute, shaft seal, seal plate, and all of the nuts, bolts, and washers necessary for assembly. Elevate your pump with a wet end designed for efficiency and seamless water flow.  
Product Code: **11110**



## Afras 3/4 HP Booster Pump Motor

Power up your pool with the motor of our Booster Pump 3/4 hp. Engineered for robust performance, this motor boasts a dual voltage capability (115V/12.8A, 230V/6.4A), providing flexibility to suit your electrical requirements. With quiet operation and user-friendly features, it seamlessly integrates into your pool system, ensuring efficient water circulation. Elevate your pool experience with a reliable motor designed to deliver power and performance.  
Product Code: **13110**



## Afras 3/4 HP Booster Pump Impeller

Revitalize your pool circulation with the impeller of our Booster Pump 3/4 hp. Precision-crafted for optimal water flow, the impeller is the powerhouse within the wet end, propelling water with efficiency. Its design ensures seamless integration and adaptability to various setups, making it a key component for enhancing your pool's performance. Dive into a world of aquatic luxury as the impeller delivers a dynamic and efficient water circulation experience, contributing to the overall excellence of your pool system.  
Product Code: **12110**



## Afras 3/4 HP Booster Pump Base

Stabilize and support your pool's booster pump with the sturdy base of our Booster Pump 3/4 hp. Engineered for durability and reliability, the base provides a solid foundation for the entire pump system. Its robust construction ensures stability during operation, minimizing vibrations and maximizing the efficiency of the pump.  
Product Code: **14110**



## Afras 3/4 HP Booster Pump Parts

	DRAIN PLUG	SEAL PLATE	HOUSING	HARDWARE	MECHANICAL SEAL
PRODUCT	19110	17110	16110	18110	15110
O-RING	15110	-	18110	-	-



## Afras Waterfall Pump Motor

Transform your water feature with our advanced Waterfall Pump Motor. Ideal for both serene backyard waterfalls and commercial displays, this motor ensures reliability and quiet operation. It offers versatile voltage compatibility, operating seamlessly at 230V and 115V, while delivering powerful water flow with a robust 1725 RPM. Consuming 5.8/11.4 AMP, it combines high performance with efficient power consumption, providing a 10% increase in energy efficiency compared to previous and comparable models. Class F insulation safeguards against overheating, extending the motor's lifespan, while advanced noise reduction technology ensures quiet operation. Compatible with Pentair AF180, AFP150, AFP180, and Century 355222S.

Product Code: **70310**



## Afras Single Speed Pump Motors

Enjoy pool perfection with our pump motor designed for seamless field replacement. The robust 56 Frame construction, coupled with versatile Square and "C" flanges, ensures compatibility with various systems. Boasting industrial-grade quality, this motor is not only cost-competitive but also energy-efficient, promising optimal performance while keeping operating costs in check. With power options ranging from 0.5 hp to 2 hp, this motor caters to pools of different sizes, delivering a perfect balance of strength and efficiency. The integrated "J" box facilitates easy installation, streamlining the upgrade process. Operating at 3450 RPM and compatible with 208-230/115 V, this motor sets a new standard for reliability and convenience in pool maintenance.

	0.5 HP	0.75 HP	1.0 HP	1.5 HP	2.0 HP
<b>PRODUCT</b>	<b>70103</b>	<b>70104</b>	<b>70106</b>	<b>70108</b>	<b>70110</b>



## Afras Two Speed Pump Motors

Dive into superior pool performance with our cutting-edge pump motor. This field-replacement automatic two-speed motor, boasting a 56 Frame design with both "C" and Square flange options, ensures versatility and seamless integration. Crafted with industrial-grade quality, this Energy Star-qualified powerhouse is not only cost-competitive but also impressively energy-efficient. Ranging from 1 hp to 2.5 HP, it caters to various pool sizes, providing the perfect balance of power and efficiency. With a built-in "J" box, installation is a breeze, promising a hassle-free upgrade to elevate your pool experience.

	56C W/ CONTROL	56 SQUARE W/ CONTROL
<b>1.0 HP</b>	<b>70204AC</b>	<b>70204AS</b>
<b>1.5 HP</b>	<b>70206AC</b>	<b>70206AS</b>
<b>2.0 HP</b>	<b>70208AC</b>	<b>70208AS</b>
<b>2.5 HP</b>	<b>70210AC</b>	<b>70210AS</b>



## Afras Variable Speed Pump Motors

Our variable speed pump motors offer a versatile and high-performance solution for both our Afras VBS pumps and other major VBS pump brands. Available in 56C frame (1.5, 2, and 3 HP) and 56SQ frame (2 and 3 HP), these motors are engineered for durability and quiet operation, featuring a super-duty TEFC design. They are paired with an advanced, user-friendly controller in a weatherproof (IPX6) enclosure, offering programmable schedules, diagnostic alarms, active power factor correction, and easy-priming modes. Designed for simple installation with unionized fittings, these ETL-listed motors deliver efficient, reliable, and ultra-quiet performance for any pool system.

	56C W/ CONTROL	56 SQUARE W/ BLK CONTROL	56 SQUARE W/ TAN CONTROL
<b>1.5 HP VBS MOTOR &amp; CONTROL</b>	<b>21150VS</b>		
<b>2.0 HP VBS MOTOR &amp; CONTROL</b>	<b>21200VS</b>	<b>71200VSB</b>	<b>71200VSA</b>
<b>3.0 HP VBS MOTOR &amp; CONTROL</b>	<b>21300VS</b>	<b>71300VSB</b>	<b>71300VSA</b>





**[afrasinc.com](https://afrasinc.com)**



copyright 2025 Afras Industries  
Newbury Park, California